

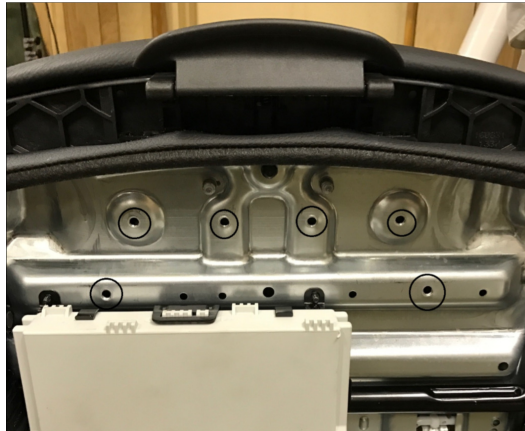
## R-2225

### **BMW Fire Extinguisher Mount** Fits late model BMWs with factory seats

The Brey-Krause R-2225 Fire Extinguisher Mount has been designed to bolt in without modification and provide a mounting point for an Amerex brand 2.5 lb. fire extinguisher w/mounting bracket or a factory BMW fire extinguisher with BMW release bracket.

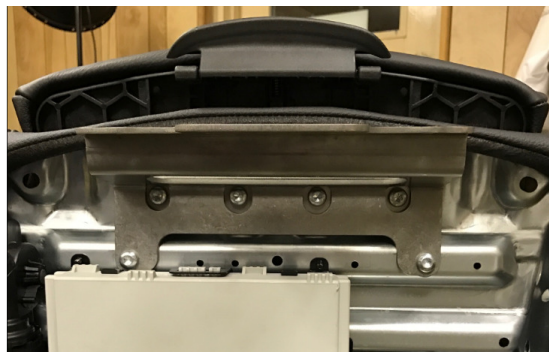
The R-2225 can be installed with the seat in the car. However, it is easier to see what you're doing with the seat out of the car. If removing seat, ensure battery is disconnected before seat wiring harness is disconnected from seat and do not reconnect battery until seat harness is reconnected to seat. Failure to do so will result in an airbag light.

The (T30) bolts included with the R-2225 are self tapping. They go into the 6 holes circled below. Long bolts go in the lower holes, short bolts go in the higher holes

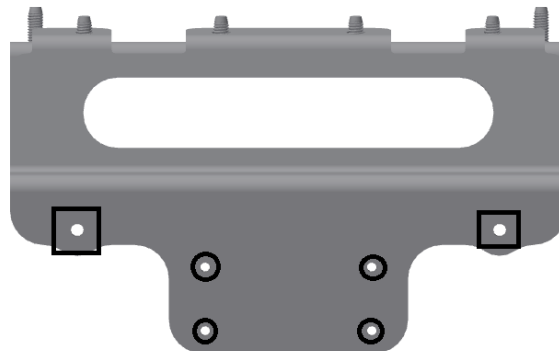


First insert all bolts a couple turns. Be careful of angle as you are tapping the holes at this point. Once all bolts are inserted a couple turns, tighten until snug, 15 ft lbs. Over tightening will result in stripped holes.

Final installation should look like this:



Top holes (in boxes) are mount points for the BMW release bracket/fire extinguisher. Lower holes (circled) are for a standard Amerex fire extinguisher bolt pattern (which is also what the Brey Krause quick release handle uses).



Performance driving events are by nature potentially hazardous to your health. Brey-Krause Mfg. Co. Inc. shall not be liable for injury, consequential, or other types of damages resulting from the use or misuse of our products. Proper installation of these parts is critical and should only be done by a professional shop.