

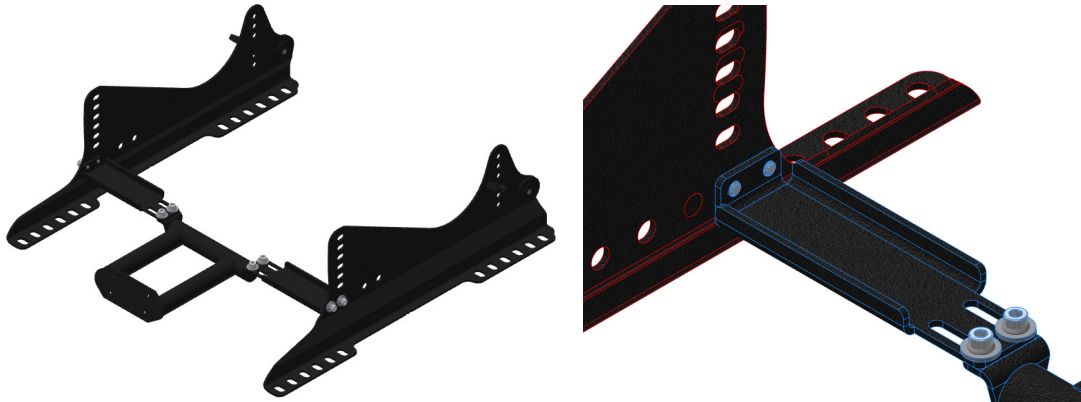
R-2295

R-2295 Fire Extinguisher Mount Installation Instructions for BMW Seat Mounts

The R-2295 Fire Extinguisher Mounting bracket mounts between Brey Krause's seat mounts for BMWs, using the small, forward most pair of horizontal holes. Depending on how high the front of your seat is angled and your preference, you can run the side brackets upside down or right side up to tweak the height of the bottle. The mounting brackets are slotted to accommodate the full range of seat widths that our seat mounts work with.

The R-2295 itself is threaded, so no nuts are required. All mounting hardware is identical. Use a (provided) washer between the bolt heads and powdercoat finish to avoid marring it and to protect the slots.

Final mounting should look similar to this:



The R-2295 can be used with either the Brey Krause R-9520 or R-9530 Quick Release Fire Extinguisher Mount, or any mount that uses the standard Amerex bolt pattern.

Performance driving events are by nature potentially hazardous to your health. Brey-Krause Mfg. Co. Inc. shall not be liable for injury, consequential, or other types of damages resulting from the use or misuse of our products. Proper installation of these parts is critical and should only be done by a professional shop.